

ITEM 34. CAR SHARE – ST JOHNS ROAD GLEBE

TRIM RECORD NO: 2014/471517

RECOMMENDATION

It is recommended that the Committee endorse the reallocation of parking on the southern side of St Johns Road, Glebe between the points 10.0 metres and 15.0 metres (1 car space) west of Broughton Street as “No Parking Car Share Vehicles Excepted” subject to the following:

- (A) The City will only install signage for the car share space when GoGet has a car to occupy the space.

DECISION

BACKGROUND

The City is committed to providing dedicated parking for car sharing across the Local Government Area as part of a Council approved Car Share Policy. A submission has been received from GoGet for a car share space in St Johns Road, Glebe, west of Broughton Street.

COMMENTS

The kerb space on the southern side of St Johns Road, Glebe between Broughton Street and Bernard Lane is currently signposted as “2P 8am-6pm Mon-Fri Permit Holders Excepted Area G”.

The car share space will be installed and managed in accordance with the Roads and Maritime Service’s Technical Direction 2007/04 and the provisions of the Council-approved Car Share Policy.

Car sharing is popular in more than 600 cities worldwide, and research has shown substantial environmental benefits. Car sharing reduces total urban driving, reduces household vehicle holdings, and increases walking, cycling and public transport use.

On average, each car share vehicle in the City can replace up to 12 private vehicles that would otherwise compete for parking. In the twelve months to April 2014, membership in the City has risen by around 418 members per month.

Current membership is approximately 21,706, of which 6,045 are business members.

As of October 2014, there were 216 GoGet car share members within a 250 metre radius of this location with 21 members in St Johns Road, 10 members in Colbourne Street, and one member in Broughton Street.

Within a 250 metre radius of this location, there are currently three spaces allocated for GoGet car share vehicles.

CONSULTATION

The City consulted local residents and businesses in the area. There were 62 letters sent out with no responses supporting or opposing the proposal.

FINANCIAL

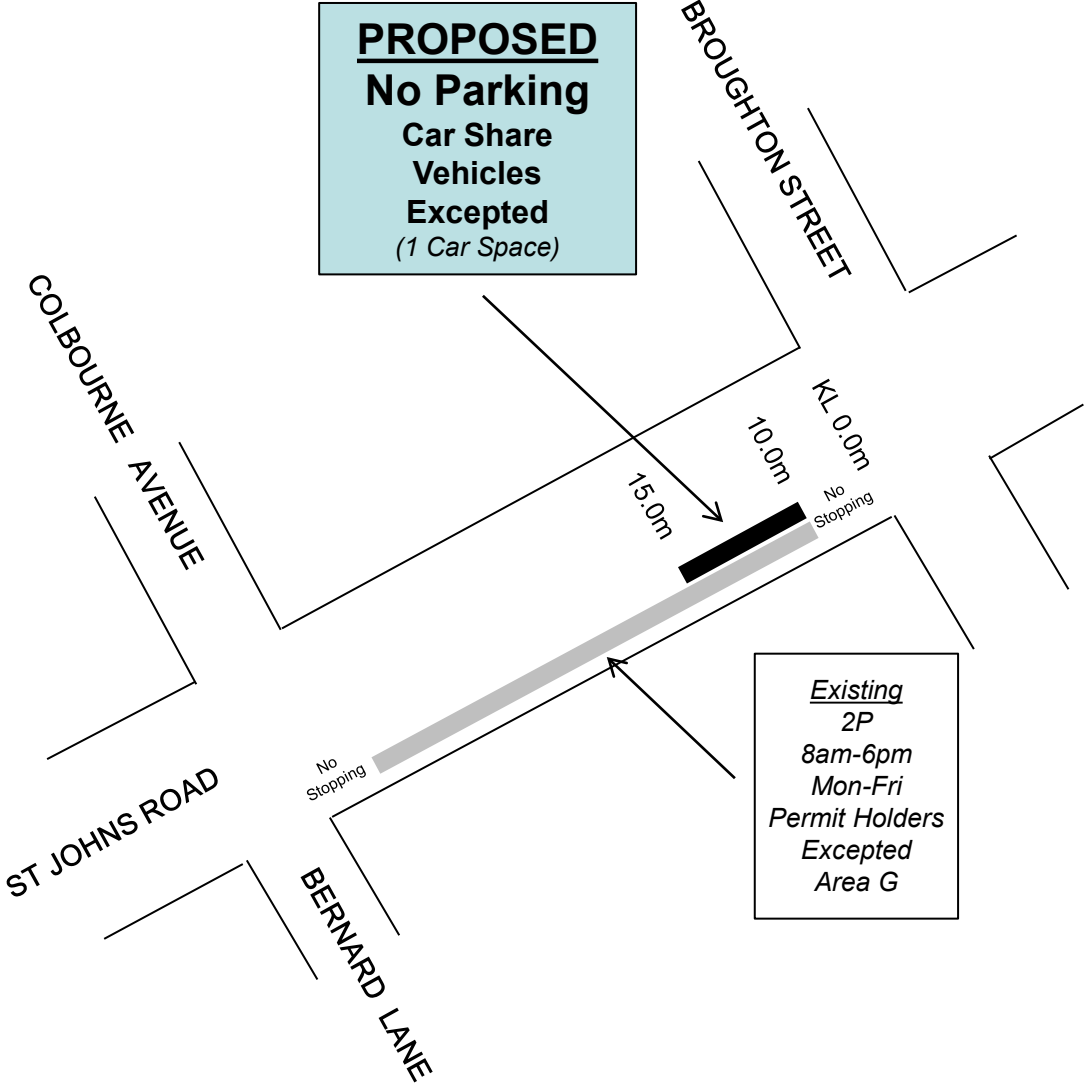
Funds are available in the current budget.

ATTACHMENTS

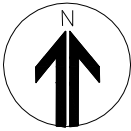
Car Share – St Johns Road Glebe

Claudia Calabro, Business Support Officer

PROPOSED
No Parking
Car Share
Vehicles
Excepted
(1 Car Space)



Existing
2P
8am-6pm
Mon-Fri
Permit Holders
Excepted
Area G



PROPOSAL

ST JOHNS ROAD, GLEBE
CAR SHARE PARKING SPACE



